



CITY OF PACIFIC GROVE  

---

URBAN FOREST MANAGEMENT PLAN





**CITY OF PACIFIC GROVE**

---

**URBAN FOREST MANAGEMENT PLAN**



## Acknowledgements

### City of Pacific Grove

#### City Council

Carmelita Garcia, Mayor  
Bill Kampe, Mayor Pro Tempore  
Alan Cohen, Councilmember  
Ken Cuneo, Councilmember  
Rudy Fischer, Councilmember  
Robert Huitt, Councilmember  
Daniel Miller, Councilmember

#### City Staff

Tom Frutchey, City Manager  
Sarah Hardgrave, Environmental Programs Manager  
Mark Zimmer, Public Works Director  
Lynn Burgess, Chief Planner  
Dee Von Donselaar, Senior Planner  
Ashely Hefner, Associate Planner  
Tess Harris, Intern  
Pilar Chaves, Volunteer

### Urban Forest Advisory Committee

Joe Bileci  
David Dilworth  
Tom Moss  
Barbara Thomas

### RBF Consulting

Bill Wiseman  
Erika Spencer  
Jonathan Schuppert

### James Allen & Associates

James Allen, Certified Arborist

### Others

Heidi Niggemeyer, MRWPCA  
Tricia Wotan, City of Monterey

### On the Cover

*Monterey Cypress at Pacific Grove*  
by Tom Brown

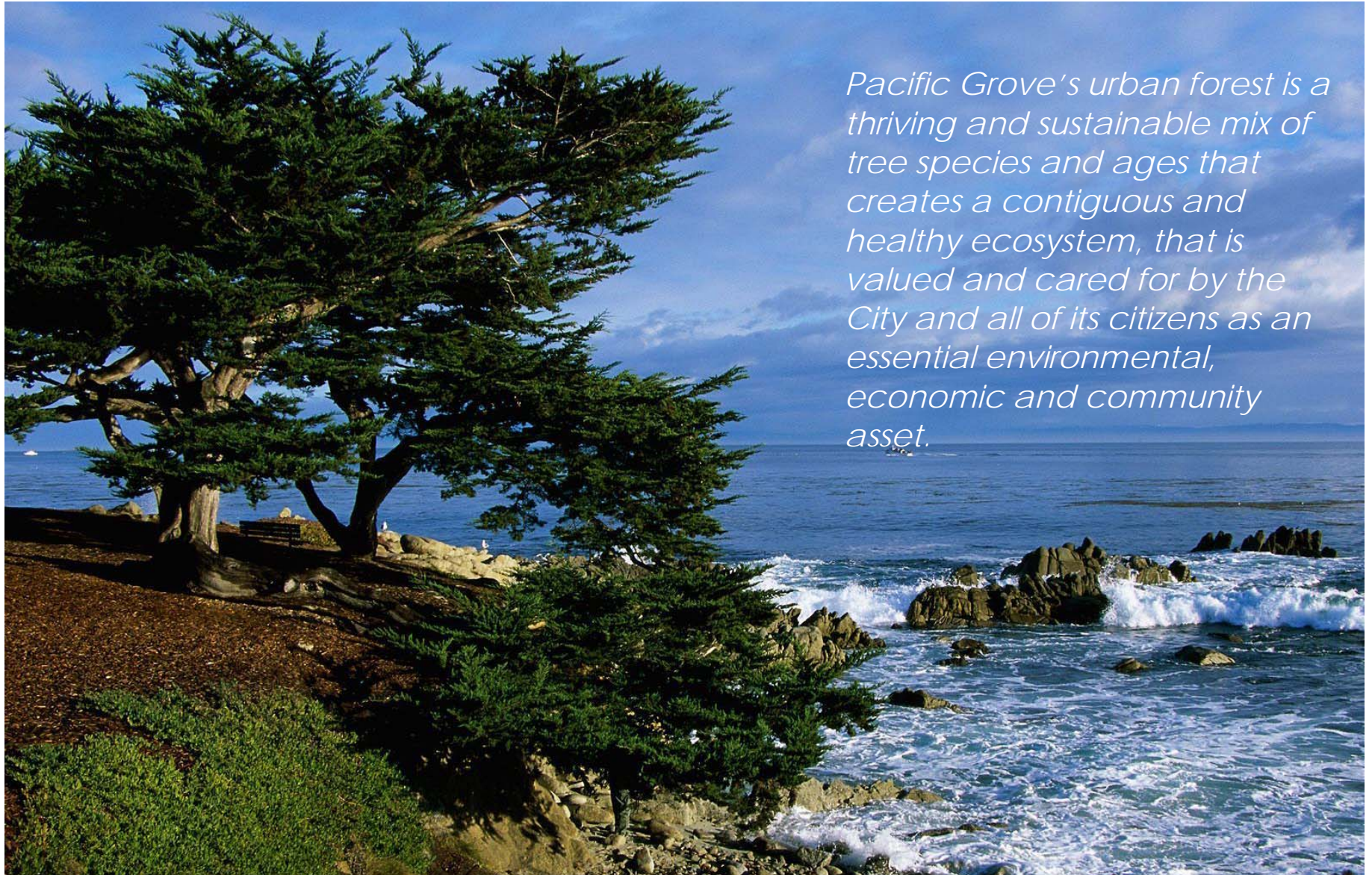
For more information:

email: [tombrownstudio@cox.net](mailto:tombrownstudio@cox.net)

Daily Painting Blog: <http://tombrownfineart.blogspot.com/>

Used by permission.

## VISION



*Pacific Grove's urban forest is a thriving and sustainable mix of tree species and ages that creates a contiguous and healthy ecosystem, that is valued and cared for by the City and all of its citizens as an essential environmental, economic and community asset.*





**Table of Contents**

**VISION ..... 6**

**EXECUTIVE SUMMARY ..... 1**

**1 | URBAN FOREST SUSTAINABILITY ..... 3**

    Purpose of the Plan ..... 4

    What is the Urban Forest?..... 4

    Why is it Important? ..... 4

        Pacific Grove’s First Urban Forest Management Plan ..... 5

    Urban Forest Sustainability ..... 7

        An Urban Forest Sustainability Model ..... 7

        Pacific Grove’s Urban Forestry History ..... 7

    Values of Pacific Grove’s Urban Forest ..... 8

        Environmental Values ..... 8

        Economic Values ..... 8

        Social Values ..... 8

    Goals of the Urban Forest Management Plan ..... 8

**2 | PACIFIC GROVE’S URBAN FOREST TODAY 10**

    Introduction (RBF) ..... 11

    Current Challenges ..... 11

        Tree Resource ..... 11

    Management Framework ..... 11

    Community Framework ..... 11

    Tree Resource Assessment ..... 11

        Soils ..... 11

        Topography ..... 11

        Land Use ..... 11

        iTree Analysis ..... 11

        Tree Hazards ..... 12

        Fire Hazards ..... 12

    Current Management Framework ..... 13

        Responsibilities by department ..... 13

        Maintenance ..... 13

        Policies and Regulations ..... 13

    Community Framework Assessment ..... 13

        Outreach ..... 13

        Volunteer Opportunities ..... 13

        Partnerships ..... 13

**3 | COMMUNITY-WIDE GOALS AND ACTIONS 15**

    Community-wide Tree Canopy Cover Goals ..... 16

    Community-wide Major Initiatives ..... 16

        An Aggressive Tree Planting Program ..... 16

TABLE OF CONTENTS

A City of Walking Corridors .....	16	Entries & Gateways.....	26
Replanting and Stormwater Management.....	16	Public Parking Lots .....	26
Tree Plantings at Gateways and Entries .....	16	Public Parks .....	26
Community-wide Goals and Actions .....	16	Trees on Private Property .....	26
Neighborhood Goals and Actions .....	22	Tree Protection During Construction .....	26
Introduction .....	22	Removal, Replacement & Planting of Trees .....	26
Additions .....	22	Hazardous Trees .....	27
Asilomar Dunes.....	22	Emergency Removal conditions.....	27
Beach Retreat .....	22	Hazardous Tree Criteria .....	27
Downtown .....	22	Hazard Reduction and Prevention .....	27
Forest Grove .....	Error! Bookmark not defined.	Fire Risk Management.....	27
Rip Van Winkle and George Washington Parks.....	23	Viewsheds .....	27
Pacific Grove Acres.....	23	Tree Maintenance Guidelines .....	27
Pacific Grove Retreat .....	23	Tree Reports .....	27
Sunset Drive.....	23	Administrative Procedures.....	27
<b>4   URBAN FORESTRY STANDARDS .....</b>	<b>24</b>	<b>5   REFERENCES / BIBLIOGRAPHY .....</b>	<b>29</b>
Introduction .....	26	Bibliography /References .....	30
Trees on Public Property .....	26	<b>APPENDIX .....</b>	<b>33</b>
Street Streets .....	26	Appendix A Pacific Grove Tree Ordinance .....	34
Walkable Corridors.....	26	Appendix B Pacific Grove Tree Planting List .....	35
		Appendix C Landscape Trees for Pacific Grove: A Guide to Selection, Planting, and Care .....	36

Appendix D Summary of Workshop Comments..... 37

### List of Figures

Figure ES-1: Aerial Photography of Pacific Grove ..... 6

Figure 2-X: Land Use ..... 11

Figure 2-X: Pacific Grove Neighborhoods ..... 11

Figure 2-X: Public Lands and Open Space ..... 11

Figure 2-X: Soils Types ..... 11

Figure 2-X: Lot Size ..... 11

Figure 2-X: iTree Inventory Sample Sites ..... 11

Table 2-X: Predominant Tree Species in Pacific Grove ..... 11

Figure 2-X: Number of Trees per Hectare in Pacific Grove (by Neighborhood) ..... 11

Figure 2-X: Tree Canopy Loss – 1986 to 2010 ..... 12

Figure 2-X: Tree Loss – 2008 to July 2011 ..... 12

Figure 2-X: Pollution Removal and Associated Value for Trees in Pacific Grove ..... 12

Figure 2-X: Carbon... ..... 12

Figure 3-X: Fire Hazard Areas ..... 12

Figure4-X: Walkable Corridors Concept Plan..... **Error! Bookmark not defined.**

### List of Tables

Table 1: UFMP Framework and Objectives ..... 8

Table 3-X: City-Wide Tree Canopy Cover and Replanting Goals..... 16

3-X: Goals, Policies and Implementation for Pacific Grove's Urban Forest Management Plan ..... 17

# EXECUTIVE SUMMARY

## EXECUTIVE SUMMARY

This Urban Forest Management Plan (UFMP) is a 25-year plan that recommends steps that the City of Pacific Grove should take to preserve its trees and the cherished Pacific coastal environment. Pacific Grove's urban forest touches the lives of its citizens every day. It consists of all trees in the city on both public as well as private property, including street trees, park trees, forested parklands, trees on schools, trees on the Pacific Grove golf course, and trees in many private ownership settings ranging from parking lots to residential yards.

Unfortunately, Pacific Grove's urban forest has significantly declined over the last few decades as the City has grown. In the past 24 years, the City's tree canopy has decreased from 33% in 1986 to 19% in 2010, a decrease of 42% (Williams, 2010). Current estimates indicate that the City has just over 25,000 trees. Restoration of this lost canopy would require the replanting and management of some 20,000 new trees.

Balancing urban goals that include managing growth/redevelopment, enhancing livability, protecting the environment, fostering economic growth, maintaining vibrant public spaces, and creating recreational opportunities is challenging and trees contribute to all of these goals.

To encourage tree preservation and planting across the City, this UFMP lays out actions ranging from improving tree care on City property to enhancing community outreach to strengthening incentives and regulations during development. The plan also establishes management goals and objectives, and identifies the challenges and opportunities for enhancing the tree canopy coverage.

Recommendations etc...

### Document Organization

The Urban Forest Management Plan is organized into the following chapters

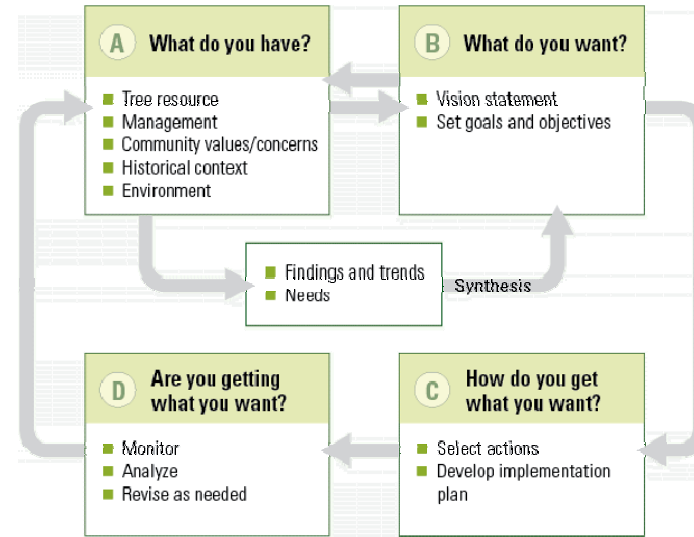
- Urban Forest Sustainability
- Pacific Grove's Urban Forest Today
- Community-Wide Goals and Actions
- Implementation Work Plan
- References / Bibliography
- Appendices

# 1 | URBAN FOREST SUSTAINABILITY

### Purpose of the Plan

The purpose of the UFMP is to guide a broad range of actions that will achieve a sustainable urban forest in Pacific Grove. This is a 25-year plan that recommends the steps the City of Pacific Grove must take to preserve and enhance they City’s trees and thereby benefit from their aesthetic, environmental and social

The UFMP has been developed in a format that can evolve and be refined over time. The highest level of the UFMP will be the 25-year strategic element which sets out the vision, goals and polices and will be used to oversee implementation and as a reference to critical tree-related decisions (e.g. development projects, management practices, etc.). Supporting these strategic elements is an implementation plan. This section contains specific actions with identified potential funding sources, responsibilities, success criteria, and monitoring requirements.



### What is the Urban Forest?

Pacific Grove’s urban forest consists of all trees in the city on both public as well a private property. This forest includes street trees, park trees, forested parklands, trees on the Pacific Grove Golf Course, trees on schools, and trees on private residential and commercial uses. Whether it’s enjoying a hike through Rip Van Winkle park or along the coastline, it is trees that comprise the urban forest and trees that make such an experience so memorable.

### Why is it Important?

Trees located throughout Pacific Grove on public and private property affect our lives and the local economy in ways that aren’t always obvious. Trees provide community, environmental, and economic benefits that range from reducing the effects of density to increasing property values to

providing ecological services such as stormwater mitigation, air toxics removal, and greenhouse gas sequestration.

### **Pacific Grove's First Urban Forest Management Plan**

While having a positive impact, these efforts have not been enough to preserve Pacific Grove's urban forest. A resource of this magnitude requires careful management to ensure its preservation, restoration, and enhancement. For that reason, the UFMP has been developed as a roadmap for the long-term management of Pacific Grove's trees.

Managing trees in a city differs from managing forests in natural settings. Urban forest management goals such as increasing tree canopy, improving public safety, and providing native habitat and recreational and educational opportunities must be balanced with other goals such as accommodating growth and facilitating transportation. The UFMP is the city's plan to integrate management of the many issues and opportunities posed by Pacific Grove's tree resource.

Additionally, all natural systems change over time. If we want these changes to enhance the urban forest, they must be actively managed. Nationally-based studies repeatedly support the fact that the resource deteriorates when human intervention is not a proactive part of urban forest management. This decline is evident by the fact that the tree canopy has been steadily declining over the past 25 years, and likely longer. It is also evident where trees are planted in places that either don't allow for growth or that conflict with build structures (e.g. houses) and public infrastructure (e.g. sidewalks and power lines). Proactive management is needed to keep our trees sustainable and in balance with other urban priorities.

Figure ES-1: Aerial Photography of Pacific Grove  
Figure to be revised to be full page



## Urban Forest Sustainability

The primary goal of the UFMP is to identify goals, recommendations, and actions that will preserve, restore, enhance, and sustain Pacific Grove's urban forest over the long term. To assist in this rigorous task, a nationally recognized Model of Urban Forest Sustainability was employed. Careful consideration was also given to how the resource has been managed in the past, what its value is today, how the resource can be sustained over time, and what set of actions will move us toward our goals. In this section, we discuss the model used to shape this plan, the history and value of the city's trees and the outcomes we expect to achieve.

### An Urban Forest Sustainability Model

Unlike timber forests that are grown primarily to produce forest products, urban forests provide services such as air and water quality improvement. Urban forests are directly affected most notably by the pressures of their location in developed areas. Given this fact, management intervention is necessary to keep city trees and forest lands within cities sustainable and healthy in perpetuity. To that end, the Urban Forest Management Plan uses a planning model framework built around a basic understanding of the unique characteristics of urban forests. Pacific Grove's UFMP is informed by "A Model of Urban Forest Sustainability" (Clark et. al, 1997). This model recognizes the challenges, benefits, and opportunities unique to city trees. Pacific Grove's sustainable urban forest model is built around four principles from this model:

- Sustainability is a broad, general goal that results in the maintenance of environmental, economic, and social functions and benefits over time.
- Urban forests primarily provide services rather than goods.
- Sustainable urban forests require human intervention.

- Trees growing on private lands compose the majority of urban forests.

Pacific Grove's UFMP has adapted the sustainability model to provide a structure that organizes our goals and the actions needed to achieve them. Although we've altered the main titles, we use the same three primary management elements as those of the model:

- **Tree Resource:** an understanding of the trees themselves, as individuals or in forest stands
- **Management Framework:** assignment of responsibility, resources, and best practices for the care of trees
- **Community Framework:** the way residents are engaged in planning and caring for trees. Because most trees in the urban forest are on private property, a successful program requires that the community plant and maintain trees on their property.

### Pacific Grove's Urban Forestry History

Pacific Grove was founded in 1875 by a group of Methodists who modeled the town after Ocean Grove, New Jersey. In time, the butterflies, fragrant pines and fresh sea air brought others to the Pacific Grove Retreat to rest and meditate. The initial meeting of the Pacific Coast branch of the Chautauqua Literary and Scientific Circle was held in Pacific Grove in June 1879. Modeled after the Methodist Sunday school teachers' training camp established in 1874 at Lake Chautauqua, N.Y., this location became part of a nationwide educational network.

Add info from reference at Community Workshop #1 regarding an article about trees 100 years ago.

Historic photos?

## Values of Pacific Grove’s Urban Forest

### Environmental Values

### Economic Values

### Social Values

## Goals of the Urban Forest Management Plan

The following...

1. Preserve and enhance the visual and aesthetic uniqueness of Pacific Grove.
2. Facilitate the protection, preservation, and restoration of Pacific Grove’s urban forest.
3. Establish and maintain an optimal mix of tree age and diversity.
4. Select, situate, and maintain trees appropriately to achieve the greatest benefits possible and to minimize hazard, damage to structures and hardscape, and maintenance costs.
5. Foster community support for and stewardship of the urban forest.
6. Provide equitable urban forest benefits for all residents of the city.
7. Facilitate the resolution of tree-oriented conflicts among different community values.

8. Reduce the amount and improve the quality of dry and wet weather flows to the Monterey Bay, and reduce the costs of diversion.
9. Provide incentives that encourage tree planting and proper maintenance on private property.
10. Place a high priority on the replacement and expansion of trees on public property.

May or may not have table below

Table 1: UFMP Framework and Objectives

Tree Resource	Management Framework	Community Framework



## **2** | **PACIFIC GROVE'S URBAN FOREST TODAY**

## Introduction (RBF)

Figure 2-X: Land Use

Figure 2-X: Pacific Grove Neighborhoods  
(from GIS)

Figure 2-X: Public Lands and Open Space

## Current Challenges

Brief description of outreach process...

The following are the current challenges to Pacific Grove's urban forest:

### Tree Resource

- 

### Management Framework

- 

### Community Framework

- 

## Tree Resource Assessment

### Soils

Figure 2-X: Soils Types

## Topography

### Land Use

Figure 2-X: Lot Size

### iTree Analysis

Introduction of iTree and satellite studies...

Figure 2-X: iTree Inventory Sample Sites  
(from city provided pdf file)

### Tree Characteristics of the Urban Forest

Numbers and species diversity...

Table 2-X: Predominant Tree Species in Pacific Grove  
(from Table 1 of the iTree Ecosystems Analysis)

Common Name	Percent Population	Percent Leaf Area	Importance Value

### Tree Canopy and Density

Figure 2-X: Number of Trees per Hectare in Pacific Grove (by Neighborhood)  
(Figure 2 1 of the iTree Ecosystems Analysis)

Figure 3-X: Fire Hazard Areas

Figure 2-X: Tree Canopy Loss – 1986 to 2010  
(satellite images)

Figure 2-X: Tree Loss – 2008 to July 2011  
(from City)

### Environmental Conditions and Benefits

#### Air pollution

Figure 2-X: Pollution Removal and Associated Value for Trees  
in Pacific Grove  
(Figure 6 from iTree Ecosystems Analysis)

#### Carbon Storage and Sequestration

Figure 2-X: Carbon...

Figure 7 from iTree Ecosystems Analysis or chart "Carbon Sequestration Density in City of Pacific Grove by Land Use (by Neighborhood)

#### Stormwater Management

#### Tree Hazards

add photos of PG

#### Fire Hazards

## **Current Management Framework**

### **Responsibilities by department**

#### **Maintenance**

#### **Policies and Regulations**

## **Community Framework Assessment**

#### **Outreach**

#### **Volunteer Opportunities**

#### **Partnerships**



# **3** | **COMMUNITY-WIDE GOALS AND ACTIONS**

This section identifies goals and specific actions needed to enhance and preserve Pacific Grove’s urban forest. Establishing the City’s goals for canopy cover overall and by neighborhood (management unit) is a necessary first step and will help guide the identification and prioritization of actions.

### Community-wide Tree Canopy Cover Goals

Introduction here...

**Table 3-X: City-Wide Tree Canopy Cover and Replanting Goals**

Statistic	Current	25-Year Goal
Total Area (Acres)		
Canopy Coverage		
Number of Trees	25,872	
<b>Plantings Needed</b>		
<b>On-time Cost of Plantings</b>		
Maintenance Costs (per Year)		
<b>Benefits (per Year)</b>		
Carbon Sequestration (Tons CO <sub>2</sub> )		
Carbon Sequestration (Value \$)		
Carbon Storage (Value \$)		
Energy		
Pollution Removal		
<b>Economic Value</b>		
<b>Net Benefit (Benefits - Costs per yr)</b>		

### Community-wide Major Initiatives

#### An Aggressive Tree Planting Program

#### A City of Walking Corridors

#### Replanting and Stormwater Management

#### Tree Plantings at Gateways and Entries

### Community-wide Goals and Actions

### 3-X: Goals, Policies and Implementation for Pacific Grove's Urban Forest Management Plan

Tree Resource			
Policy	Implementation	Responsibility	Priority
<b>Goal TR-1: Preserve and enhance the visual and aesthetic uniqueness of Pacific Grove.</b>			
TR 1.X: Increase the tree canopy in Pacific Grove from __% to __% in the next 25 years.	Establish a tree replanting program by funding a city-owned nursery with the goal of planting __ tree annually.		
TR 1.X: Establish and market Pacific Grove tree resources as a unique brand.	Continue and expand opportunities to build trees into marketing materials to promote tourism and solidify community values and stewardship of/for tree resources in Pacific Grove.	Director of Community Development Tourist Bureau Chamber of Commerce	
TR 1.X: Identify and develop funding sources to support and enhance the image and aesthetic quality of Pacific Grove.	Research and pursue urban forestry funding opportunities, such as: <ul style="list-style-type: none"> <li>• City-wide assessment district</li> <li>• Fines from ordinance violations</li> <li>• Tree removal permit mitigation fees</li> <li>• General fund</li> <li>• Grants</li> <li>• Community groups</li> <li>• Corporate/local business sponsorship</li> <li>• Partnerships with utilities</li> </ul>	Environmental Programs  City Manager	
TR 1.X: Maintain and enhance forest systems that support the Monarch Grove Sanctuary.	Fund the implementation of <i>Monarch Grove Habitat Management Plan</i> . Perform an inventory of individual trees in the sanctuary. Expand plantings of large scale trees surrounding the sanctuary to recreate buffering structures. Implement City's Tree Risk Assessment program.	Public Works Superintendent and Staff Friends of Monarch Grove City Arborist/Urban Forester	
TR 1.X: Preserve and protect heritage trees.	Perform an inventory of individual heritage trees Begin restocking by planting additional Monterey cypress in a variety of sizes in anticipation of decline of existing trees. Define and implement a Maintenance and Monitoring Program for heritage trees.	Inventory Contractor Forestry Staff City Arborist/Urban Forester	

Tree Resource			
TR 1.X: Develop large-scale trees at community gateways/entries.	<p>Identify areas where adequate space is available and conditions will support large scale trees.</p> <p>Create planting sites.</p> <p>Select, plant and maintain 60 to 72-inch boxed trees at Highway 68 and Central Avenue entry points.</p>	<p>Public Works Superintendent</p> <p>City Arborist/Urban Forester</p>	
<b>Goal TR-2: Provide equitable urban forest benefits for all residents of the City.</b>			
TR 2.X: Define protocol for equalizing benefits, responsibilities, and risks for private property owners	<p>Identify incentives for property owners with canopy coverage levels/trees per acre that exceed community averages, such as:</p> <ul style="list-style-type: none"> <li>• Exemption from special assessment districts</li> <li>• Rebates on City taxed purchases</li> <li>• Property tax credit</li> </ul> <p>Assess benefits from trees growing on private property and design credit opportunities based on economic value of benefits.</p>	<p>City Manager</p> <p>City Arborist/Urban Forester</p>	
TR 2.X:	Define thresholds for removing trees with hazardous condition that pose risk.	<p>Public Works Superintendent,</p> <p>City Arborist/Urban Forester</p>	
<b>Goal TR-3: Provide incentives that encourage tree planting and proper maintenance on private property.</b>			
TR 3.X: Require tree planting on private property as per the UFMP’s Urban Forestry Standards” (Chapter 4).	See Chapter 4.	Public Works/Planning	
TR 3.X: Require tree	Define replacement policy that is community supported and not punitive		
TR 3.X In lieu fees	Create a “Pay for Planting” program where property owners that want to plant large trees on their property are paid a fee from in lieu funds for the purchase, planting and maintenance of a tree that will benefit the community.	Public Works/Planning	
<b>Goal TR-4: Place a high priority on the replacement and expansion of trees on public property.</b>			
TR 4.X: Identity opportunity sites on public property that can accommodate new tree planting.	Perform an “available space” study using existing aerial photos over laid against land use maps.	Planning Staff	
TR 4.X: Prioritize key streets for tree planting with potential for linking the city that can become walkable pedestrian corridors.		Public Works Department	

Tree Resource			
TR 4.X: Ensure that street design and redesign projects include trees.		Public Works Department	

Management Framework			
Policy	Implementation	Responsibility	Priority
<b>Goal MF-1: Facilitate the protection, preservation, and restoration of Pacific Grove's urban forest.</b>			
MF 1.X: Existing condition assessment	Perform an individual inventory of all trees on public lands.	Independent contractor	
MF 1. X: City Arborist/Urban Forester	Recruit and hire a qualified a professional as the Pacific Grove City Arborist/Urban Forester.	City Manager Public Works Superintendent	
MF 1. X: Build a Forestry Division	Recruit and hire qualified professionals to maintain trees on City lands. Purchase equipment.	City Manager Public Works Superintendent	
Alternative to MF 1.X Contract tree maintenance	Engage a private contractor to maintain City trees in a pro-active manner	Public Works Superintendent	
MF 1. X: Tree Preservation on Public and Private Lands	Identify and correct ordinance deficiencies.	RBF, City Staff, UFAC and Community	
MF 1. X: Tree Preservation During Development	Revise standards for Tree Resource Assessments for development projects.	RBF, City Staff, UFAC and Community	
<b>Goal MF-2: Establish and maintain an optimal mix of tree age and diversity.</b>			
MF 2. X: Tree planting	Initiate annual tree planting programs to replant 2000 trees per year.	City Arborist/Urban Forester	
MF 2.X: Selection	Increase species selection choices. Expand and Update <i>Landscape Trees for Pacific Grove</i> .	Independent Consultant	

Management Framework			
<b>Goal MF-3: Select, situate, and maintain trees appropriately to achieve the greatest benefits possible and to minimize hazard, damage to structures and hardscape, and maintenance costs.</b>			
MF 3.X: Define community risk tolerance thresholds	Update City's <i>Hazard Tree Risk Management Policy #700-1</i> . Define and formalize a Tree Risk Assessment (TRA) program. Implement TRA program on City owned lands. Quickly remove trees that exceed community tolerance thresholds. Assess high risk trees on private property objectively and expediently.	City Arborist/Urban Forester	
MF 3.X: Pro active management	Define and Initiate a Maintenance and Monitoring Program for <u>all trees</u> on public lands. Properly prune trees on a regular cycle. Remove high risk trees as necessary. Maintain inventory database as record of community "Due Standard of Care" performance.	City Arborist/Urban Forester  Contract Tree Service Or Forestry Personnel	
MF 3.X: Selection	Provide guidance to homeowners as to proper species selection for the site and cultural conditions.	City Arborist/Urban Forester  Forestry Personnel	
MF 3.X: Fuels and Fire Hazards	Identify City owned lands with high levels of flammable fuels such as Rip Van Winkle Park). Design and implement a Flammable Fuel Reduction Program.	Environmental Programs Manager  Public Works Superintendent	
MF 3.X: Habitat Management, Input to Resource Framework			
<b>Goal MF-4: Reduce the amount and improve the quality of dry and wet weather flows to the Monterey Bay, and reduce the costs of diversion.</b>			
MF 4.X: Identify existing conditions	Commission and complete watershed modeling and green retrofit studies	Environmental Programs Manager	
MF 4.2: "Green" infrastructure for storm water management	Determine the most effective placement and planting site requirements to maximize trees as storm water capture and filtration systems Design infrastructure that facilitates infiltration and phyto remediation Plant large scale trees to maximize interception, filtration and capture	Environmental Programs Manager Private contractor Public Works Superintendent	

Community Framework			
Policy	Implementation	Responsibility	Priority
<b>Goal CF-1: Foster community support for and stewardship of the urban forest.</b>			
CF 1.1: Enhance public awareness of the urban forest as a community resource.	<p>Involve the community in inventories and assessments as part of future tree management activities as well as neighborhood planning efforts.</p> <p>Develop and promote community service opportunities with schools and other institutions for urban forest stewardship projects.</p> <p>Capitalize on the research being undertaken by others to quantify the financial value associated with the social and environmental benefits afforded by the urban forest.</p>		
CF 1.2: Engage the community in active stewardship of the urban forest.	<p>Engage the community through active participation in a city-funded replanting program designed to plant _____ new trees each year over the next ___ years.</p> <p>Encourage and support the establishment of community-based volunteer organizations dedicated to stewardship of Pacific Grove’s urban forest.</p>		
CF 1.3: Promote citizens-government-business partnerships.	<p>Develop a coordinate approach to seek funding from sources such as local and regional foundations, industry and corporations.</p> <p>Partner with nurseries and the landscape industry to make quality information and plant materials available, particularly information to discourage the sale and planting of known non-native invasive plan species.</p> <p>Institute a program to acknowledge and publicize contributions to urban forestry by citizens, businesses, institutions, and neighborhood group organizations.</p> <p>Facilitate opportunities to collaborate with local universities and the private sector regarding urban forestry research and practices.</p> <p>Work collaboratively with the Pacific Grove Chamber of Commerce to increase the number of trees along streets and within parking lots in downtown Pacific Grove.</p>		

## Neighborhood Goals and Actions

### Introduction

*Note: this section will be generally no more than 1 page per neighborhood with some narrative and use of summary bullets*

- Additions
- Asilomar Dunes
- Beach Retreat
- Downtown
- Del Monte Park
- Rip Van Winkle and George Washington Parks
- Pacific Grove Acres
- Pacific Grove Retreat
- Sunset Drive

### Additions

Brief description...

*graphic image of Neighborhood boundaries (clip from Neighborhood map)*

### Current Conditions & Issues

### Desired Condition

### Goals and Actions

### Asilomar Dunes

Brief description...

*graphic image of Neighborhood boundaries (clip from Neighborhood map)*

### Current Conditions

### Desired Condition

### Issues and Opportunities

### Goals and Actions

### Beach Retreat

Brief description...

*graphic image of Neighborhood boundaries (clip from Neighborhood map)*

### Current Conditions & Issues

### Desired Condition

### Goals and Actions

### Downtown

Brief description...

*graphic image of Neighborhood boundaries (clip from Neighborhood map)*

### Current Conditions & Issues

### Desired Condition

### Goals and Actions

**Del Monte Park**

Brief description...

*graphic image of Neighborhood boundaries (clip from Neighborhood map)*

**Current Conditions & Issues**

**Desired Condition**

**Goals and Actions**

**Rip Van Winkle and George Washington Parks**

Brief description...

*graphic image of Neighborhood boundaries (clip from Neighborhood map)*

**Current Conditions & Issues**

**Desired Condition**

**Goals and Actions**

**Pacific Grove Acres**

Brief description...

*graphic image of Neighborhood boundaries (clip from Neighborhood map)*

**Current Conditions & Issues**

**Desired Condition**

**Goals and Actions**

**Pacific Grove Retreat**

Brief description...

*graphic image of Neighborhood boundaries (clip from Neighborhood map)*

**Current Conditions & Issues**

**Desired Condition**

**Goals and Actions**

**Sunset Drive**

Brief description...

*graphic image of Neighborhood boundaries (clip from Neighborhood map)*

**Current Conditions & Issues**

**Desired Condition**

**Goals and Actions**

# 4 | URBAN FORESTRY STANDARDS



## Introduction

Intro here....

*NOTE: this section to draw on useful elements of existing ordinance as well as other standards including the City of Palo Alto Tree Technical Manual as well as photos and graphic illustrations.*

## Trees on Public Property

### Street Streets

#### Planting & Replacement

#### Maintenance

#### Stormwater Management

### Walkable Corridors

### Entries & Gateways

### Public Parking Lots

### Public Parks

#### Planting & Replacement

#### Maintenance

#### Stumps, Snags and Slash Removal

## Trees on Private Property

### Tree Protection During Construction

Impacts to Structures and Sidewalks

### Removal, Replacement & Planting of Trees

(from Palo Alto manual...)

#### Tree Removal

#### When Tree Replacement is Required

#### Alternatives When Trees Cannot be Replace On-site

#### Tree Canopy Replacement Standards for On-site Tree Replacement

Lots-size dependent...

#### Tree Value Replacement Standards

#### Security Deposits

#### Tree and Shrub Planting Specifications

#### Planting Stock and Materials

#### Planting Site Preparation

#### Planting the Tree

#### Planting in Difficult Soil Conditions (?)

## **Hazardous Trees**

**Emergency Removal conditions**

**Hazardous Tree Criteria**

**Hazard Reduction and Prevention**

**Fire Risk Management**

**Viewsheds**

**Tree Maintenance Guidelines**

Use Palo Alto standards as a basis and modify to local conditions?

**Tree Reports**

Use Palo Alto standards as a basis and modify to local conditions?

**Administrative Procedures**

Identify procedures for updating and amendments...



# 5 | REFERENCES / BIBLIOGRAPHY

## **Bibliography /References**

Clark, J. N. (1997). *A Model of Urban Forest Sustainability*.  
Journal of Arboriculture.





# APPENDIX

**Appendix A**  
**Pacific Grove Tree Ordinance**

**Appendix B**  
**Pacific Grove Tree Planting List**

**Appendix C**  
**Landscape Trees for Pacific Grove: A Guide to Selection, Planting, and Care**

**Appendix D**  
**Summary of Workshop Comments**



**CITY OF PACIFIC GROVE**  
**URBAN FOREST MANAGEMENT PLAN**